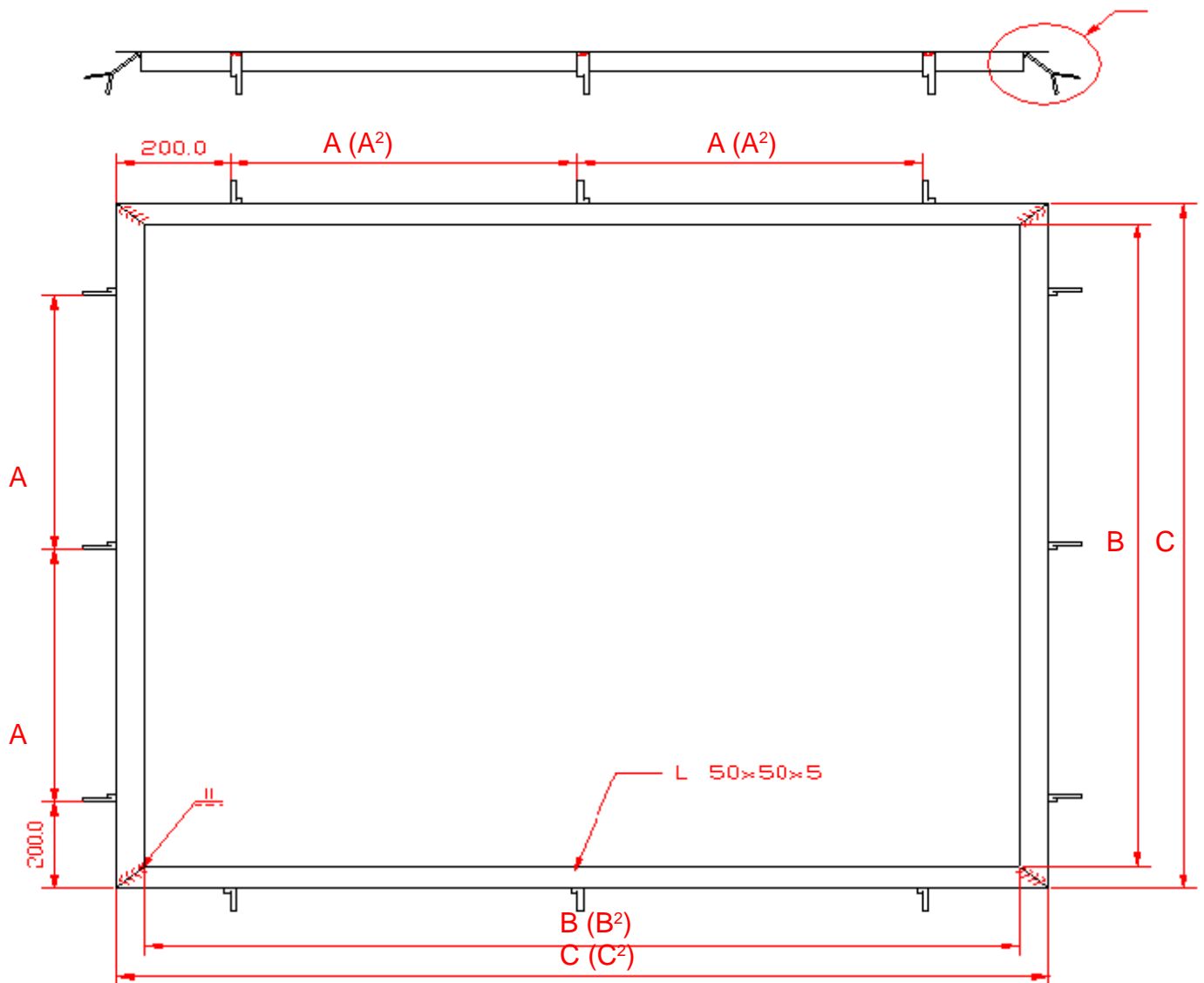


Marco de montaje para balanza de suelo PCE-SD...F



Plataforma	A	B	C
800 x 800 mm	225 mm	820 mm	920 mm
1.000 x 1.000 mm	350 mm	1020 mm	1120 mm
1.250 x 1.250 mm	475 mm	1270 mm	1370 mm
1.500 x 1.500 mm	600 mm	1520 mm	1620 mm
1.500 x 2.000 mm	725 mm	1520 mm	1620 mm

$A^2 = 800 \text{ mm}$ $B^2 = 2020 \text{ mm}$ $C^2 = 2120 \text{ mm}$

