

GAMMA-SCOUT ONLINE-Model

08.01.2010

This user guide is serving to install the Gamma-Online Software.

SET ON / OFF OF THE ONLINE OPERATION

The GAMMA-SCOUT® ONLINE model has been designed to transmit the detected pulses in cycles of 60/30/10 seconds to a connected PC.

To start the ONLINE operation of the device the user may follow the b.m. steps.

Press the button interface (computer icon) twice and the word „ON” is displayed. Confirm this by pressing the “Enter” button. Now the ONLINE operation has been set on and the device is transmitting the data cyclicly via the USB interface to an external data file, i.e. a PC.

Stopping the ONLINE operation, the a.m. steps are repeated, finding the word “OFF” on the display and pressing the “Enter” button to confirm.

The computer icon on the display will disappear after switching off the ONLINE operation.

CHECK THE DATA TRANSMISSION : Install the USB interface

The USB driver must be installed from the bypacked CD ROM.
After connecting your Gamma-Scout® with any USB-interface of your PC, Windows will ask for this driver.



Please select „Include this location in the search ...“ and press „Browse“.



Use the button „Browse“



... and navigate to the USB-file folder on your inserted CD.

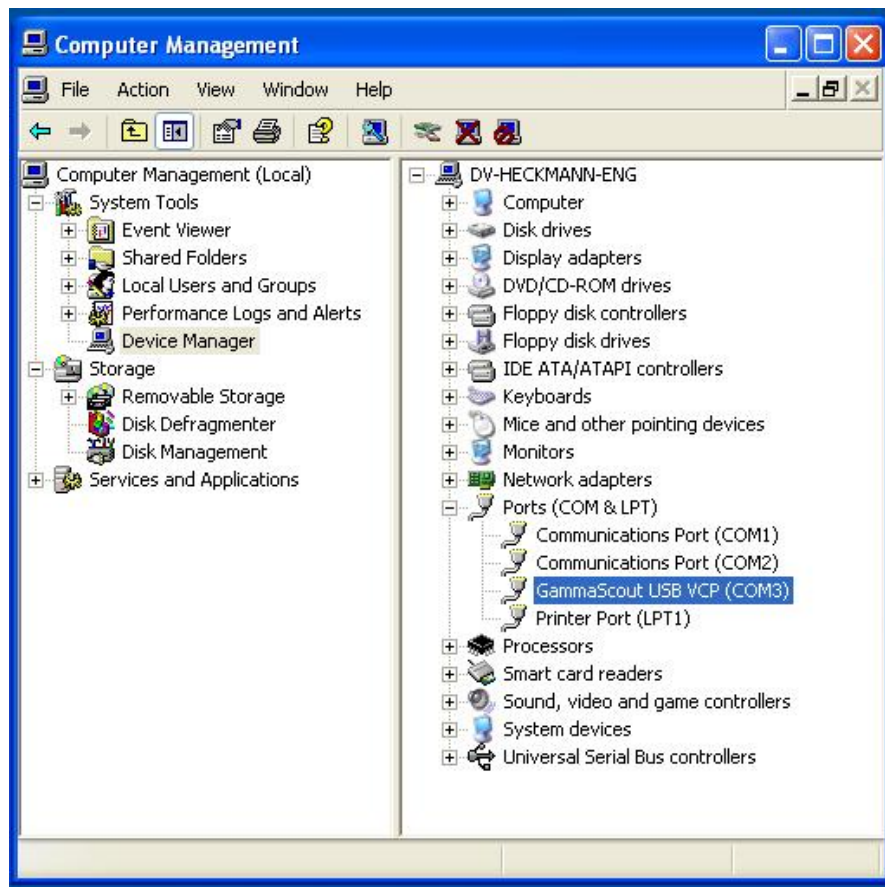
Press „OK“ and in the basic window „Continue“.

Following the menu, needed files to be found in the USB directory of the CD will be installed on the PC automatically.

CHECK THE COM INTERFACE :

After installation check the setting of the COM-interface, which has been assigned by the USB driver automatically.

Pressing the button “My Computer” on your desktop, using the right mouse pad. In the popped up menu select “Manage” with your left mouse pad. The screen “Computer management” is displayed. Here you click “Device manager”. In the right column of the screen you see a listing. There you click “PORTS” and the listing is extended.



Now you should see the item „GammaScout USB VCP (COMxx)“.

The COM-interface used by the USB driver in the example is COM3.

Please remember this COM-number for later calling on the interface!

TRANSMISSION TEST VIA THE WINDOWS SYSTEM PROGRAM „HYPER-TERMINAL”

Windows attached is a free Windows system program to check interfaces, called “Hyper-Terminal”.

Using this program you can visualise the ONLINE operation of the Gamma-Scout ®.

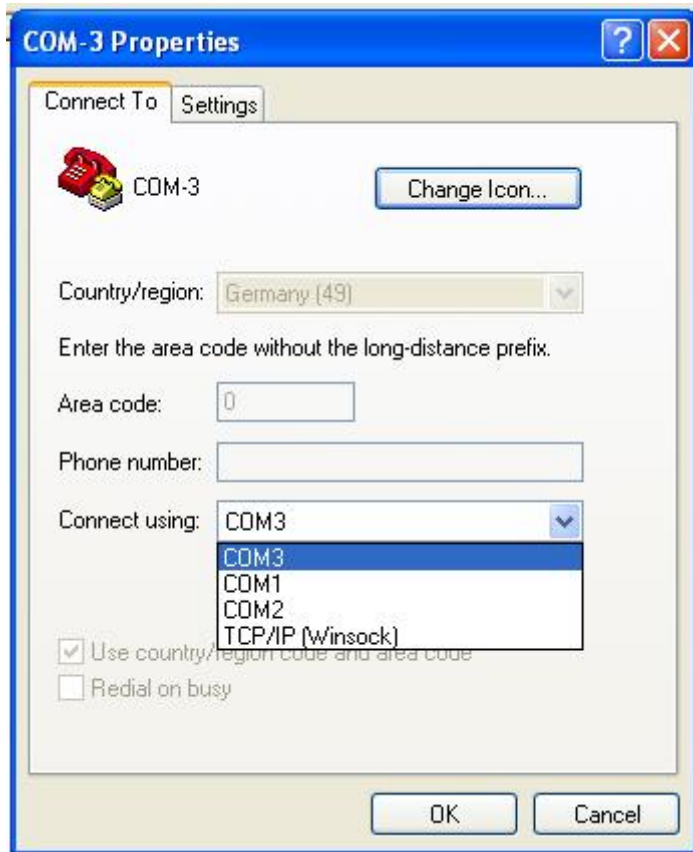
To do this, follow the next steps:

In a subdirectory of the bypacked CD called
ONLINE_VERSION / ENGLISH / HYPERTERMINAL
you find two test files for the program Hyper-Terminal (HT) with the names
COM1-GS.ht, COM2-GS.ht and COM3-GS.ht.

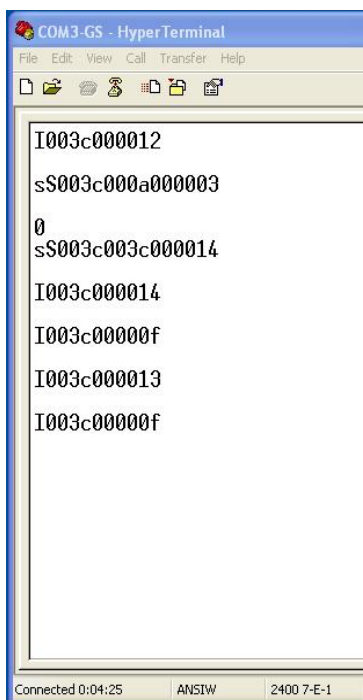
In case you get another interface than COM3 ,COM2 or COM3, please change the settings as follows:

Open the HT program by double click on one of the a.m. *.ht-files.

In the menu select FILE - PROPERTIES



Select the port assigned to Gamma-Scout scrolling to „Connect using :“



Pressing the telephone icon on the menu line you are opening the interface.

In the status line below you get the message „Connected“ .
The interface is active now.

If you give a ,1' in the main screen, all 10 seconds you should see a data set, beginning with „I“.

If you enter,s' you get a response beginning with „S“.

You may close the connection by leaving the program.

The examination of the USB-interface using the program Hyper-Terminal is finished now.
Please leave the program Hyper-Terminal to release the COM-Port!

INSTALLATION OF THE ONLINE SERVICE :

Windows is offering a service, which operates very stable within © MS-Windows.
Our service is converting the data into an “easy to read” format.

Copy and paste the following file contents from the bypacked CD, using the Windows data manager, directly into your WINDOWS (WINNT) directory

(can be found under „C:\Windows“) :

From the CD-directory	the file
WINDOWS_SERVICE	GammaService.exe
WINDOWS_SERVICE_INSTALLER	InstallGammaService.exe
WINDOWS_DLLS	Supercom.dll
WINDOWS_ONLINE_VIEWER	GSRegViewer.exe

Copy and paste the following file contents from the bypacked CD via the Windows-data manager directly into your WINDOWS\SYSTEM32 directory (mostly to be found under „C:\Windows\System32“) :

From the CD-directory	the file
WINDOWS_DLLS	borIndmm.dll
	cc3260.dll
	cc3260mt.dll
	stlp45.dll

Open the DOS-entry screen, using START – RUN and entering “cmd” within this screen for execution.

The DOS - entry screen will pop up.

On this screen go to your WINDOWS (WINNT) directory

(here in this example under C:\Windows) using the commands

```
c: [ENTER]
cd\ [ENTER]
cd WINDOWS
and install the service entering
```

InstallGammaService GammaService.exe [ENTER]

You should get the message „ – Service installed“ .

In case you do not get this message, probably you do not have the user rights to install a service. Call your system administrator, to get the rights for „local administrator on your PC or restart your PC under the user profile of “Administrator” and try the procedure again.

After installation of the service without error message, it must be configured now.

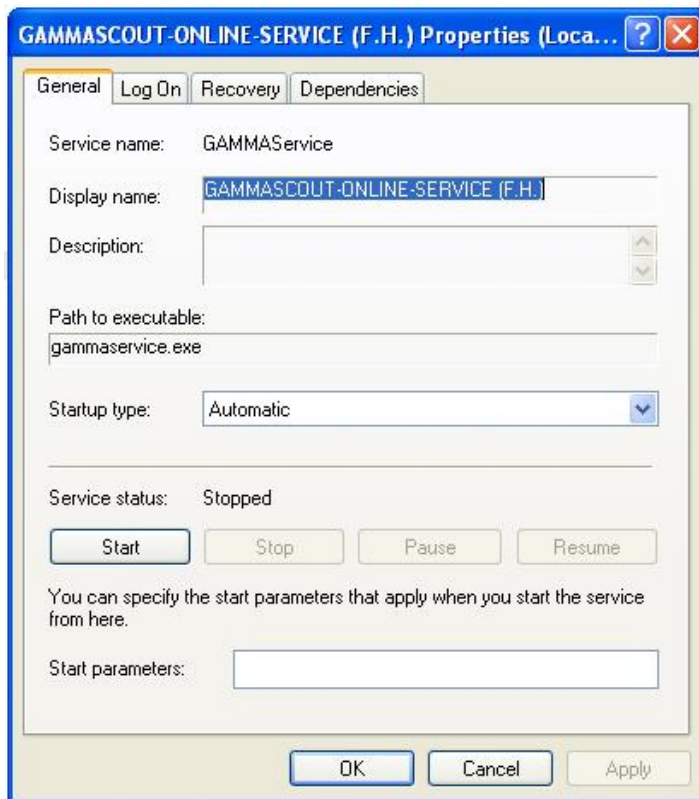
CONFIGURATION OF THE PARAMETERS OF THE SERVICE GAMMA ONLINE :

Open the screen „Computer management“, as explained above, and click on „Services and Applications“, then on „Services“. A screen should pop up with the services installed on your system.

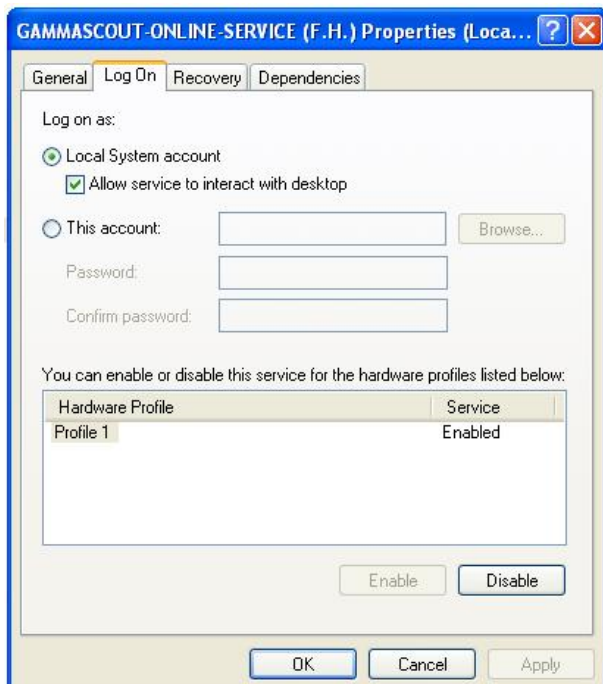
Got to the item

„GAMMA-SCOUT-ONLINE-SERVICE (F.H.) and double click.

The next screen has to pop up :



In this screen you set the Start type on „Automatic“ and then go to „Log On“ :



Set the „Log on as :“
Local System Account
and mark the square (see left
hand) „Allow service ...“.

Click „Apply“ and
close the screen
via „ok“.

Under these settings the
“Service” must run!

Never permit the service to run under a
common user account.

Now the „Service“ has been installed and is ready to run.

INTERFACE FOR DATA TRANSMISSION „Windows - Registry“ :

Within the foregoing steps you have copied our bypacked program to your Windows file system : GSRegViewer.exe

Gamma-Scout Online Registry Tool (c) Dr. Mirow Gamma-Scout V 1.1

REQUEST (REQ_)	RESULT (RES_)
REQ_COMNUM 3	RES_COUNTER 43
REQ_INTERVALL 1	RES_INTERVALL 6
REQ_LOGFILEPATH c:\gamma.log	RES_PULSES 2
REQ_LOGFILETYPE 1	RES_SERVICE_MESSAGE Interval 10 after 6 seconds : "S000a0006000002"
	RES_SERVICE_TIMESTAMP 2005-07-21 16:57:35
	RES_TS 2005-07-21 16:57:33
	RES_TSOLD 2005-07-21 16:57:28

Buttons: Start service, Stop service, Acyclically request on interstatus

Status: Service running !

Using this programm you have the following options:

REQ_Fields to enter parameters to the “Service”
RES_Fields to read parameters set to the “Service”

Please enter your parameters into the REQ_Fields:

- COMNUM COM-Port number of the Gamma-Scout USB interface
- INTERVALL 1 for 10 seconds
 2 for 30 seconds
 3 for 60 seconds
- LOGFILEPATH - path and filename to file transmitted data
- LOGFILETYPE 0 for ASCII (text) Logfile
 1 for CSV-Logfile (MS-Excel-compatible)

Using the button „Store data“ the is written to the Registry and assigned to the “service”.

The result fields of the Service have the following meaning:

(and, of course, cannot be entered; this is done by the “Service” itself !)

- COUNTER : Counting the events, is increased with each measuring
- INTERVALL : Display of the selected cycle in seconds
- PULSES : Sum of counted pulses per interval
- SERVICE_MESSAGE : Readable error messages or the interval
- SERVICE_TIMESTAMP : Cyclical time stamp, activity marker of the service
- TS : Time stamp at the end of the running count
- TSOLD : Time stamp of the end of the previous count

Description of the buttons :

Start service : After setting the REQ_ - parameters and entering them to the system via the button „Store data“ you can start the service with „Start service“.

In case of first time starting the service, the registry-parameters are configured. Therefore you must start the service after the initial installation repetetively before it is running. This may need up to 4 trials.

Stop service Stops the service to change any parameter within the REQ_Fields . Attention: The service is ready for new parmeters only in stop status. Only here the button „Store data“ is active.

Acyclically request ... Because an interval of 60 seconds will output data only after one minute, this button permits to call off intermediate data (after ca. 2 seconds) for the running count (= ,s' entering to Gamma-Scout during the count, see „Hyperterminal“)

FILING THE DATA :

The entered data are recorded in the file, which has been set in the REQ_LOGFILEPATH.

In our a.m. example this would have been the ASCII-file „C:\Gamma-Scout.log“, if the parameter REQ_LOGFILETYPE has been set to „0“, and to the CSV-file „C:\Gamma-Scout.log.csv“, if REQ_LOGFILETYPE has been set to „1“.

Attention :

If another value than „1“ or „0“ is in the REQ_LOGFILETYPE, no data will be recorded.

Example ASCII-Logfile :














```
-----
RES_COUNTER      : 6
RES_INTERVALL    : 10
RES_PULSES       : 2
RES_SERVICE_MESSAGE : Cyclic received data : "I000a000002"
RES_SERVICE_TIMESTAMP : 2005-07-21 15:24:59
RES_TS           : 2005-07-21 15:24:59
RES_TSOLD        : 2005-07-21 15:24:49
REQ_COMNUM       : 3
REQ_INTERVALL    : 1
REQ_LOGFILEPATH  : c:\gamma.log
REQ_LOGFILETYPE  : 0
-----
RES_COUNTER      : 8
RES_INTERVALL    : 10
RES_PULSES       : 3
RES_SERVICE_MESSAGE : Cyclic received data : "I000a000003"
RES_SERVICE_TIMESTAMP : 2005-07-21 15:25:09
RES_TS           : 2005-07-21 15:25:09
RES_TSOLD        : 2005-07-21 15:24:59
REQ_COMNUM       : 3
REQ_INTERVALL    : 1
REQ_LOGFILEPATH  : c:\gamma.log
REQ_LOGFILETYPE  : 0
-----
RES_COUNTER      : 9
RES_INTERVALL    : 8
RES_PULSES       : 2
RES_SERVICE_MESSAGE : Interval 10 after 8 seconds : "S000a0008000002"
RES_SERVICE_TIMESTAMP : 2005-07-21 15:25:17
RES_TS           : 2005-07-21 15:25:17
RES_TSOLD        : 2005-07-21 15:25:09
REQ_COMNUM       : 3
REQ_INTERVALL    : 1
REQ_LOGFILEPATH  : c:\gamma.log
REQ_LOGFILETYPE  : 0
-----
RES_COUNTER      : 10
RES_INTERVALL    : 10
RES_PULSES       : 2
RES_SERVICE_MESSAGE : Cyclic received data : "I000a000002"
RES_SERVICE_TIMESTAMP : 2005-07-21 15:25:19
RES_TS           : 2005-07-21 15:25:19
RES_TSOLD        : 2005-07-21 15:25:17
REQ_COMNUM       : 3
REQ_INTERVALL    : 1
REQ_LOGFILEPATH  : c:\gamma.log
REQ_LOGFILETYPE  : 0
-----
```

Example CSV-Logfile :

```
RES_COUNTER;RES_INTERVALL;RES_PULSES;RES_SERVICE_MESSAGE;RES_SERVICE_TIMESTAMP;RES_TS;RES_TSOLD;REQ_COMNUM;REQ_INTERVALL;REQ_LOGFILEPATH;REQ_LOGFILETYPE
21;10;2;cyclic received data : "I000a000002" ;2005-07-21 15:26:59;2005-07-21 15:26:59;2005-07-21 15:26:39;3;1;c:\gamma.log;1
22;10;0;cyclic received data : "I000a000000" ;2005-07-21 15:27:09;2005-07-21 15:27:09;2005-07-21 15:26:59;3;1;c:\gamma.log;1
23;10;1;cyclic received data : "I000a000001" ;2005-07-21 15:27:19;2005-07-21 15:27:19;2005-07-21 15:27:09;3;1;c:\gamma.log;1
24;10;4;cyclic received data : "I000a000004" ;2005-07-21 15:27:29;2005-07-21 15:27:29;2005-07-21 15:27:19;3;1;c:\gamma.log;1
25;10;2;cyclic received data : "I000a000002" ;2005-07-21 15:27:39;2005-07-21 15:27:39;2005-07-21 15:27:29;3;1;c:\gamma.log;1
26;10;3;cyclic received data : "I000a000003" ;2005-07-21 15:27:49;2005-07-21 15:27:49;2005-07-21 15:27:39;3;1;c:\gamma.log;1
27;10;2;cyclic received data : "I000a000002" ;2005-07-21 15:27:59;2005-07-21 15:27:59;2005-07-21 15:27:49;3;1;c:\gamma.log;1
28;10;5;cyclic received data : "I000a000005" ;2005-07-21 15:28:09;2005-07-21 15:28:09;2005-07-21 15:27:59;3;1;c:\gamma.log;1
29;10;2;cyclic received data : "I000a000002" ;2005-07-21 15:28:19;2005-07-21 15:28:19;2005-07-21 15:28:09;3;1;c:\gamma.log;1
30;10;3;cyclic received data : "I000a000003" ;2005-07-21 15:28:29;2005-07-21 15:28:29;2005-07-21 15:28:19;3;1;c:\gamma.log;1
31;10;3;cyclic received data : "I000a000003" ;2005-07-21 15:28:39;2005-07-21 15:28:39;2005-07-21 15:28:29;3;1;c:\gamma.log;1
32;10;1;cyclic received data : "I000a000001" ;2005-07-21 15:28:49;2005-07-21 15:28:49;2005-07-21 15:28:39;3;1;c:\gamma.log;1
33;8;1;Interval 10 after 8 seconds : "S000a0008000001" ;2005-07-21 15:28:57;2005-07-21 15:28:57;2005-07-21 15:28:49;3;1;c:\gamma.log;1
34;10;2;cyclic received data : "I000a000002" ;2005-07-21 15:28:59;2005-07-21 15:28:59;2005-07-21 15:28:57;3;1;c:\gamma.log;1
35;4;2;Interval 10 after 4 seconds : "S000a0004000002" ;2005-07-21 15:29:03;2005-07-21 15:29:03;2005-07-21 15:28:59;3;1;c:\gamma.log;1
36;10;5;cyclic received data : "I000a000005" ;2005-07-21 15:29:09;2005-07-21 15:29:09;2005-07-21 15:29:03;3;1;c:\gamma.log;1
37;10;7;cyclic received data : "I000a000007" ;2005-07-21 15:29:19;2005-07-21 15:29:19;2005-07-21 15:29:09;3;1;c:\gamma.log;1
```

Used Registry-Keys :

HKEY_LOCAL_MACHINE-SOFTWARE-GAMMASCOUT-ONLINE

 (Default)	REG_SZ	(value not set)
 REQ_COMNUM	REG_SZ	3
 REQ_INTERVALL	REG_SZ	1
 REQ_LOGFILEPATH	REG_SZ	c:\gamma.log
 REQ_LOGFILETYPE	REG_SZ	1
 REQ_STATUS	REG_SZ	
 RES_COUNTER	REG_SZ	39
 RES_INTERVALL	REG_SZ	10
 RES_PULSES	REG_SZ	7
 RES_SERVICE_M...	REG_SZ	GAMMA-ONLINE-Service has ended !
 RES_SERVICE_TI...	REG_SZ	2005-07-21 15:29:22
 RES_TS	REG_SZ	2005-07-21 15:29:19
 RES_TSOLD	REG_SZ	2005-07-21 15:29:09

© HSV-Datentechnik Mannheim
© Dr.Mirow Gamma-Scout

Inquiries please via
drmirow@gamma-scout.com