

Instruction for HARDNESS Software

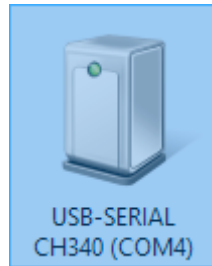
1. Install HARDNESS software

- Double click "Setup.exe" to install software. Follow the setup wizard till it is finished. If User Account Control displays, select "Yes" to allow installation. After installation, a shortcut "Hardness" will be put on the desktop.

2. Using Hardness Software by cable connection (HARTIP1800/HARTIP1800B)

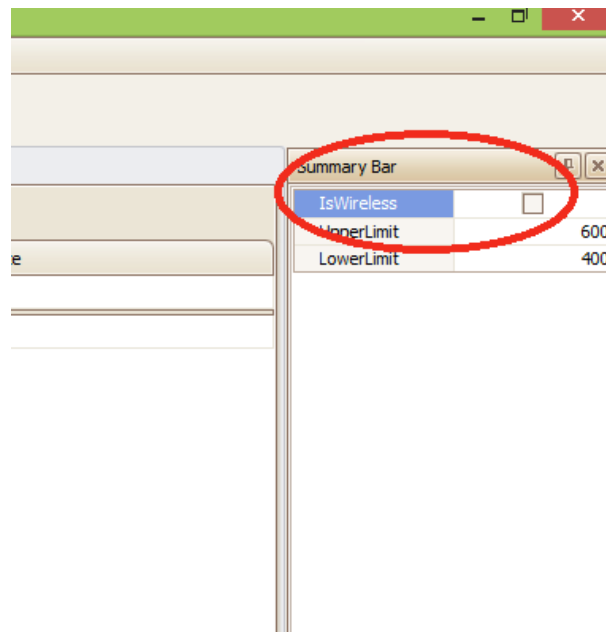
2.1. Connect HARTIP1800 to PC with USB cable

- Connect HARTIP1800 and PC with USB cable, then the HARTIP1800 will be turned on and enter the charging mode automatically.
- The driver will be installed automatically or manually depends on different windows systems. If the driver is not installed automatically, please specify the driver folder (CDROM\Drivers) manually while the system is scanning drivers.
- After the driver is installed successfully, a new device will display in Control Panel\Hardware and Sound\Devices and Printers as below. (It might be slightly different in different systems)

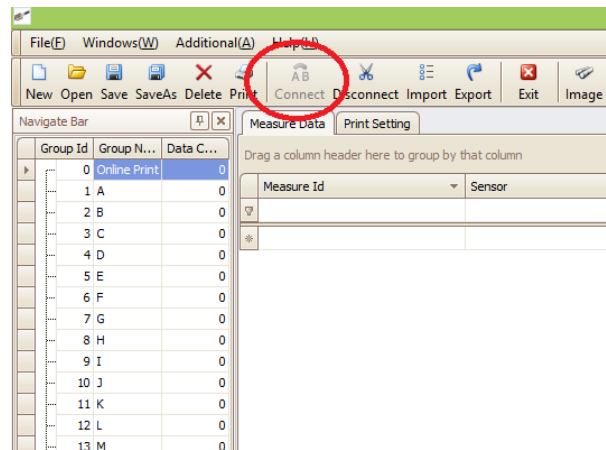


2.1. Start PC software

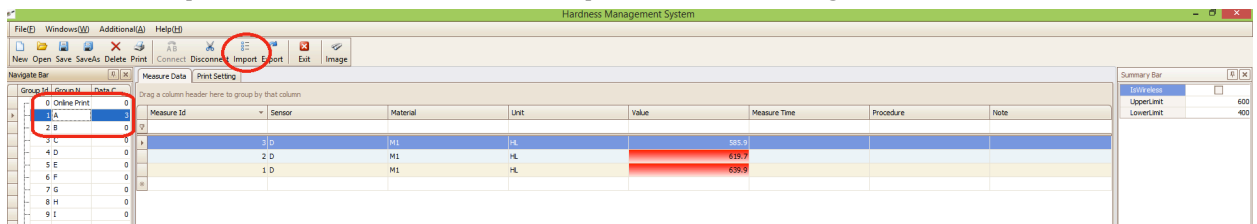
- Double click the shortcut "Hardness" to run the program.
- Make sure "IsWireless" is unchecked. (in the top right corner of main interface)



- Click the "Connect" from the toolbar to create connection between PC and tester.



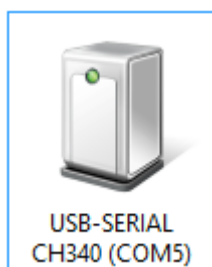
- After connection is successful, the Connect button will be disabled.
- Click "Import" button from the toolbar to import stored measuring data to PC.



3. Using Hardness Software by wireless connection (HARTIP1800/HARTIP3210)

3.1. USB Dongle

- Insert USB dongle to PC
- The driver will be installed automatically or manually depends on different windows systems. If the driver is not installed automatically, please specify the driver folder (CDROM\Drivers) manually while the system is scanning drivers.
- After the driver is installed successfully, a new device will display in Control Panel\Hardware and Sound\Devices and Printers as below. (It might be slightly different in different systems)



3.2. HARTIP1800

Switch on the tester, turn on the print online option:

Press ▼ to enter the Menu screen. Press ▼ or ▲ to select Print on line option and press ► to enter. Press ▼ or ▲ to select X(Off) → √(On) in turn. To enable wireless connection, please select ON.

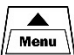
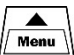


Press ► to confirm after selection and return to the Menu screen, or press and hold any key to save







and return to the Measure screen. After print on line is enabled, the symbol will display on the screen.

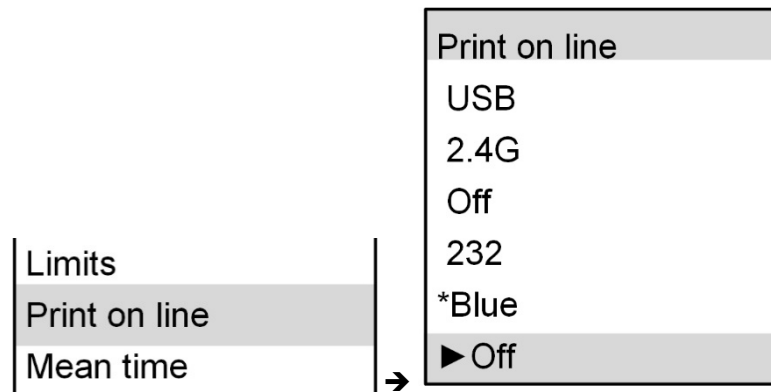
3.3. HARTIP3210

Insert USB dongle to PC, switch on the tester, then enable “Print on line” option.

Press  to enter main Menu and press   to select “Print on line” and press  to enter Print on line menu.

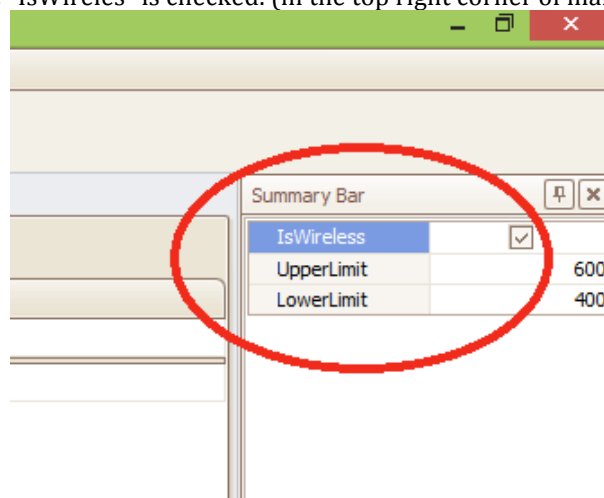
Press   to select current wireless connection 2.4G (Default) or Blue(Bluetooth, Optional), then press  to confirm selection and go back to main menu, or press and hold  to return to Measure screen.

After “Print on line” is enabled, a printer with wireless indicator will display on the top line of the measuring window.

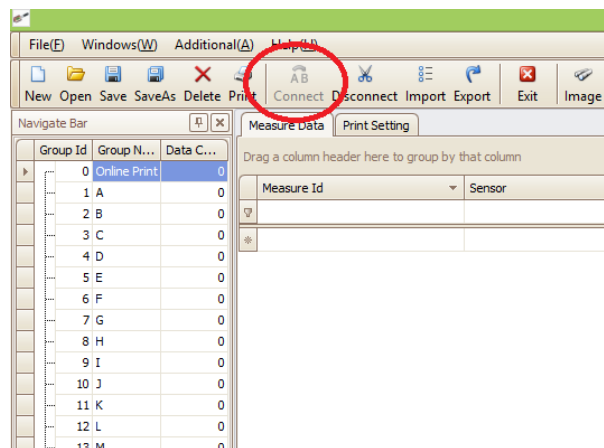


3.4. Start PC software

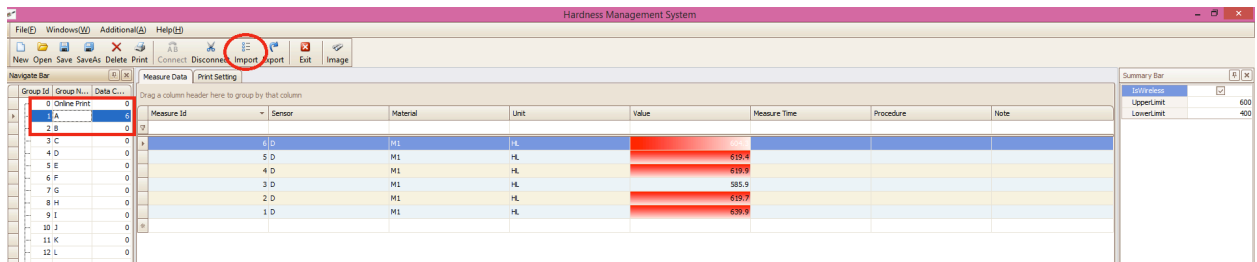
- Double click the shortcut "Hardness" to run the program.
 - Make sure "IsWireless" is checked. (in the top right corner of main interface)



- Click the "Connect" from the toolbar to create connection between PC and tester.







- After connection is successful, the Connect button will be disabled.
- Click “Import” button from the toolbar to import stored measuring data to PC.

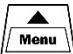





4. Using Hardness Software by Bluetooth connection (HARTIP3210)

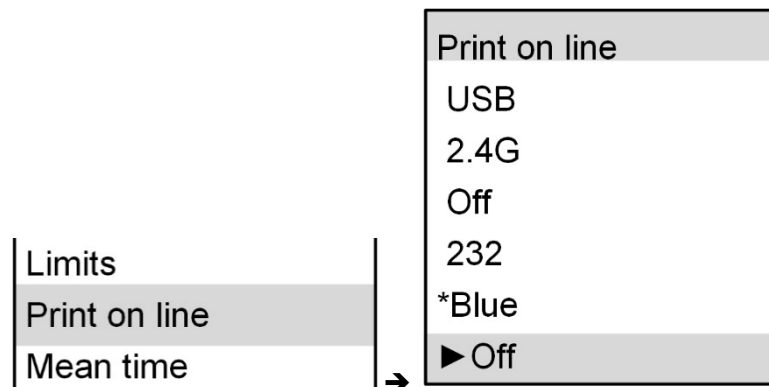
4.1. HARTIP3210

Switch on the tester, then enable “Print on line” option. (USB dongle is not needed)

Press  to enter main Menu and press   to select “Print on line” and press  to enter Print on line menu.

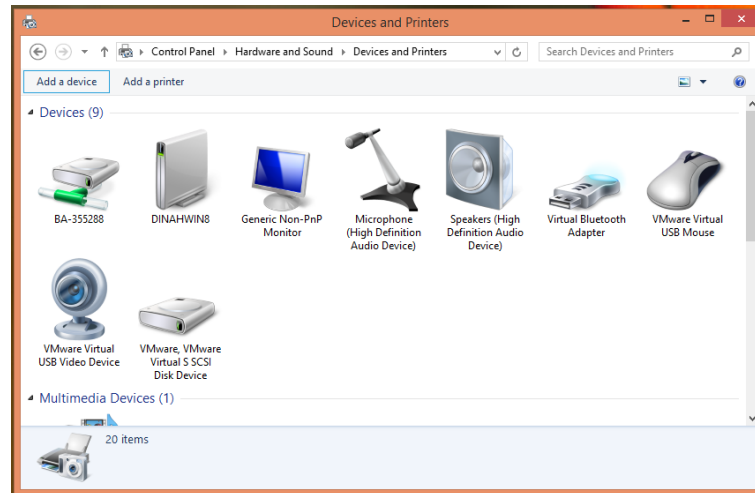
Press   to select Blue(Bluetooth, Optional), then press  to confirm selection and go back to main menu, or press and hold  to return to Measure screen.

After “Print on line” is enabled, a Bluetooth indicator will display on the top line of the measuring window.



4.2. Pairing HARTIP3210 with PC

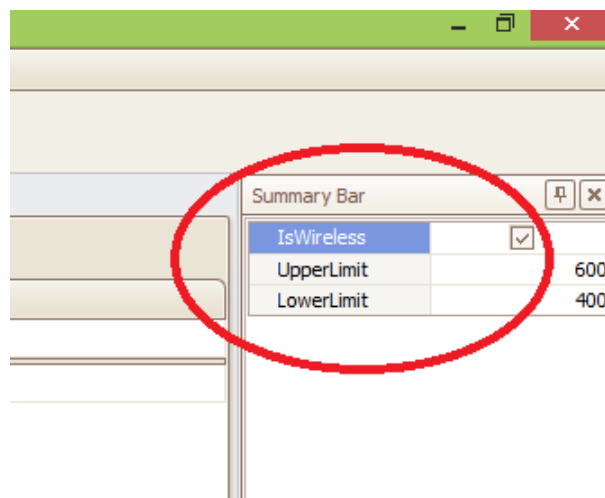
Run “Control Panel” from the windows, then click “Devices and Printers” → “Add a device”



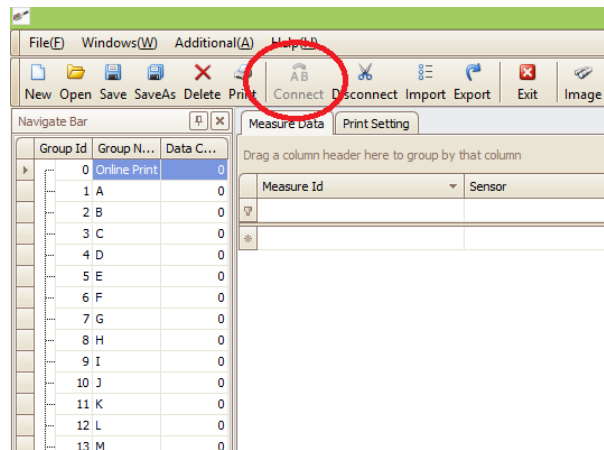
Then you will find a new Bluetooth device named as “HC-05” which is the HARTIP3210, please pair this device with your PC, the pairing code is 1234.

4.3. Start PC software

- Double click the shortcut “Hardness” to run the program.
- Make sure “IsWireless” is Unchecked. (in the top right corner of main interface)



- Click the "Connect" from the toolbar to create connection between PC and tester. Please note the HARTIP3210 must be in Bluetooth mode when you connect it with PC by Bluetooth connection.



- After connection is successful, the Connect button will be disabled.
- Click “Import” button from the toolbar to import stored measuring data to PC.

