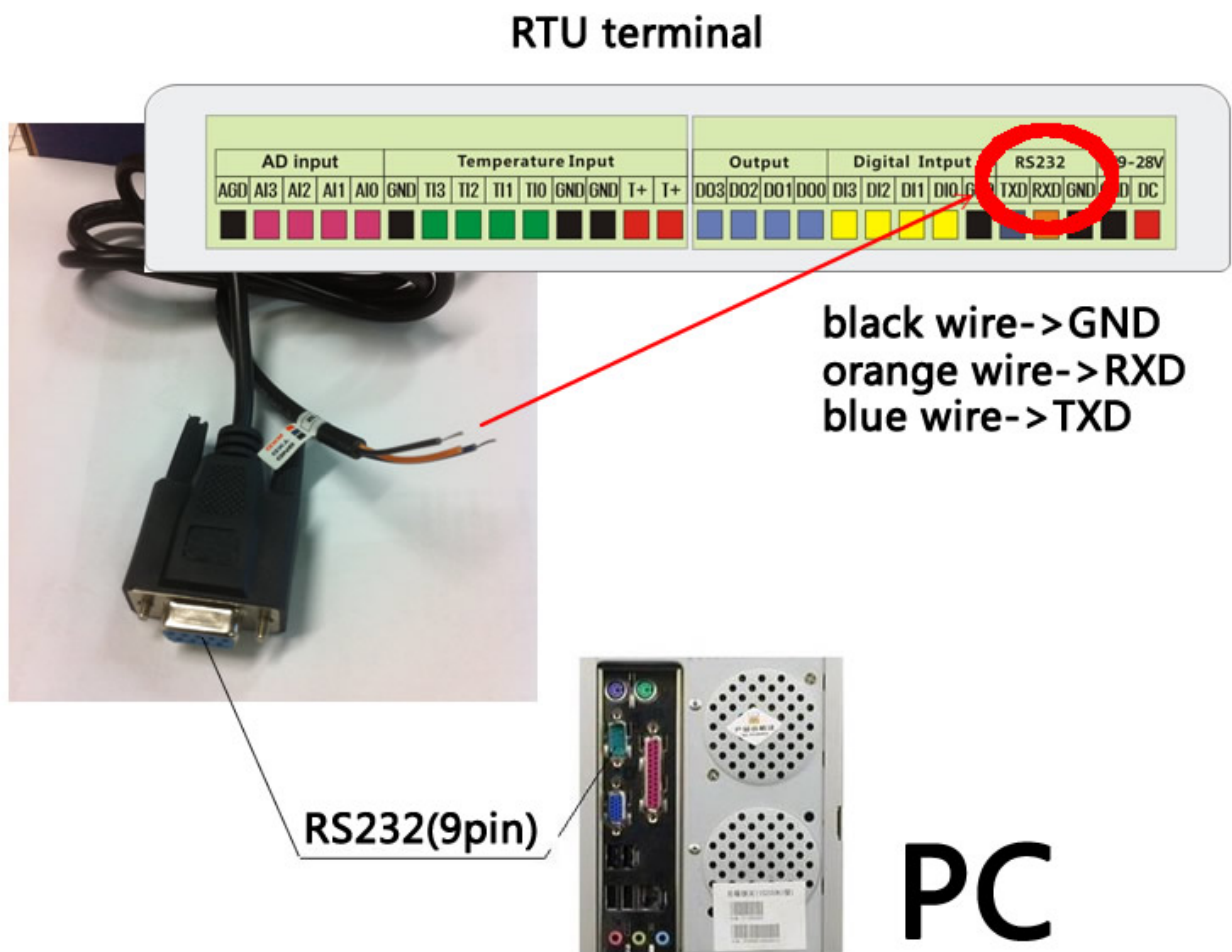


RTU Quick Start

1 CONNECT RTU TO PC

Connect RTU and computer with RS232 cable



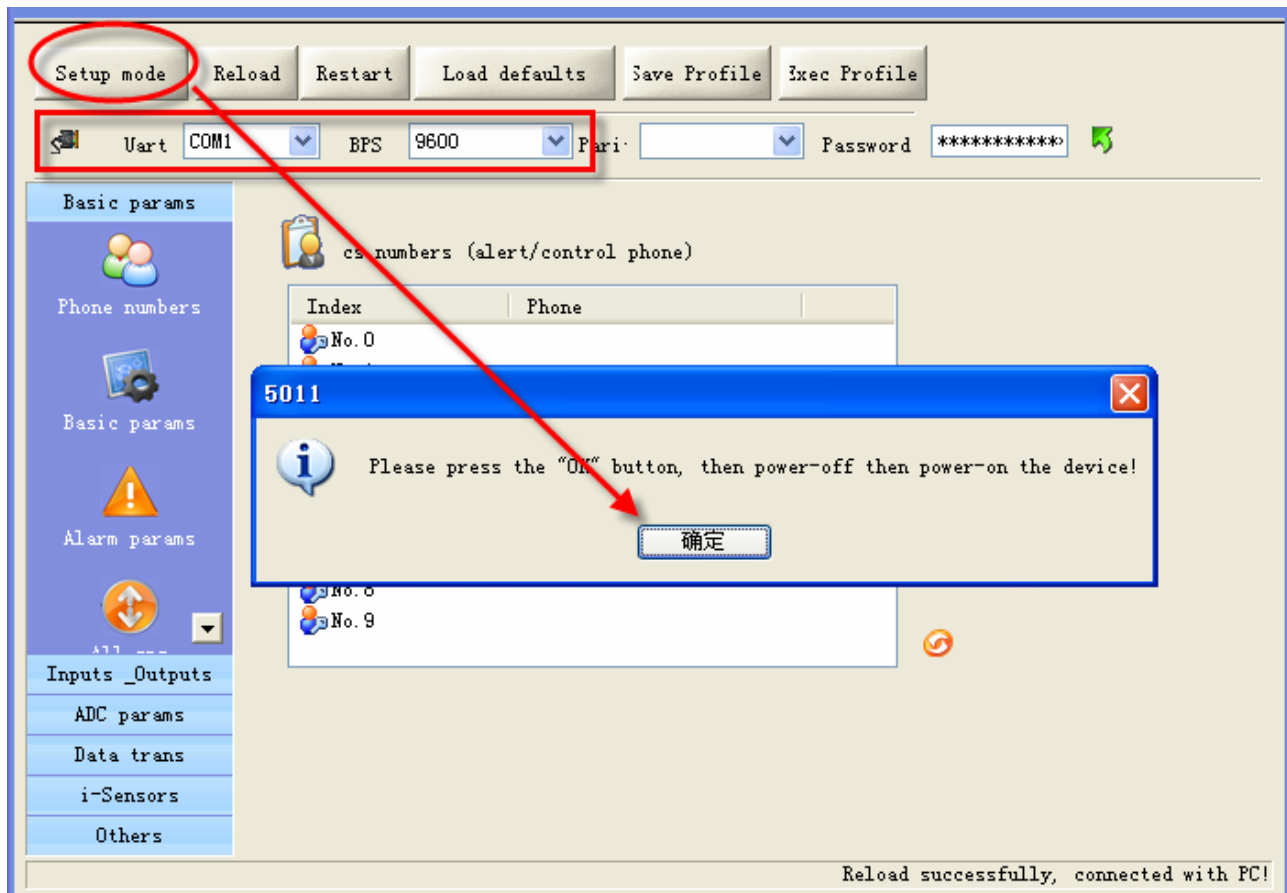
2 SETUP RTU BY SOFTWARE

Run the configuration software

2.1 Access setup mode

Connect RTU and computer with RS232 cable, and open the configuration software, make RTU access setup mode according to the following step.

- Power off RTU
- Choose the serial port No. and rate correctly
- Click "Setup mode", press "OK"
- Power on RTU



⚠ How to know RTU is in "Setup mode":

Check the ACT light, if the ACT light flickers twice per second that means it is in the setup mode

⚠ NOTE

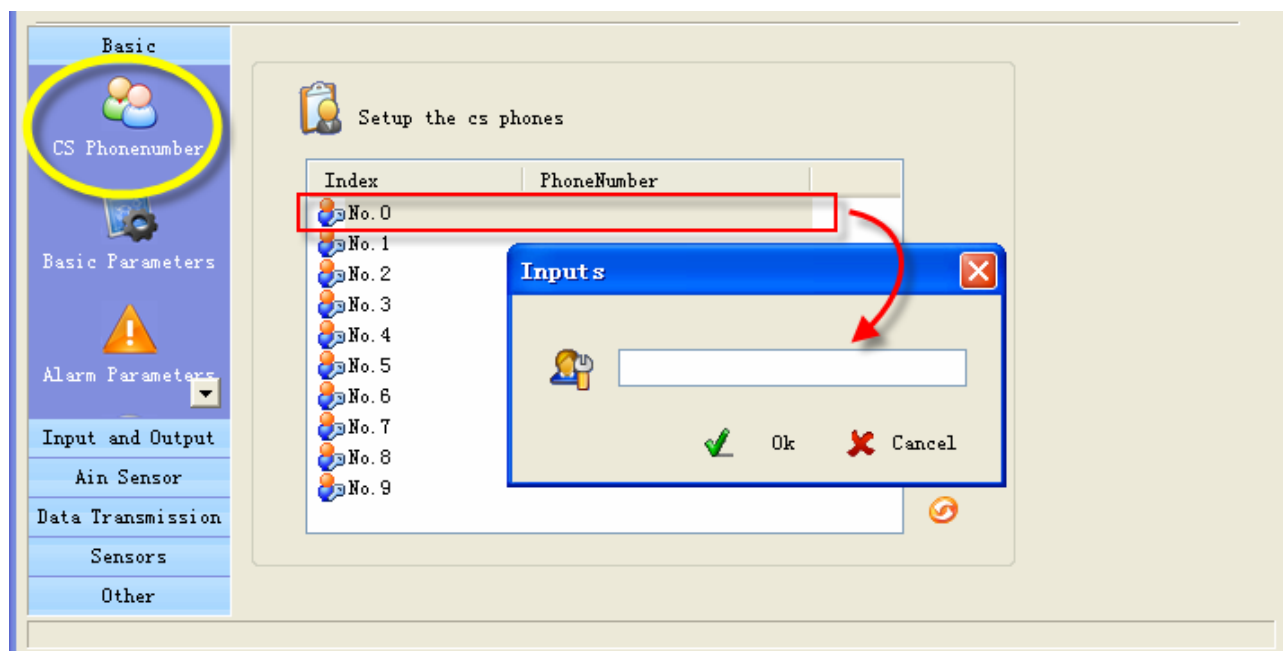
Access setup mode, the simcard and antenna is unnecessary, but access working mode, the simcard and antenna is necessary.

In setup mode, all functions are disabled, only to setup parameters. And RTU must be restart to enter working mode, all functions is enabled, the RTU can alarm and be control.

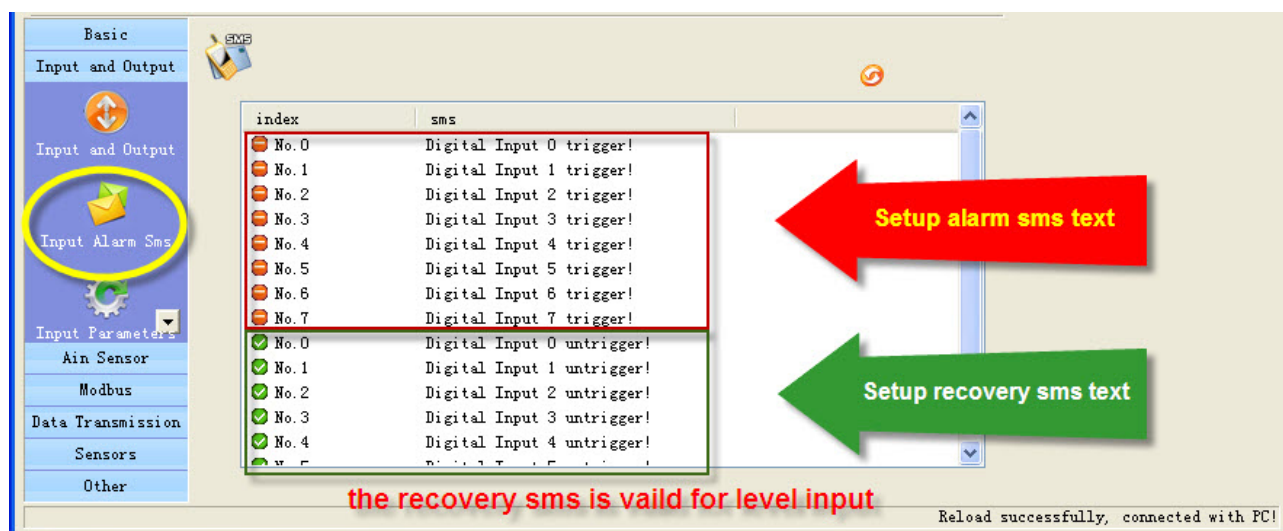
2.2 Setup CS number

The "CS number" can send sms commands to control RTU and receive sms (include alarm sms, report sms etc). User can set 10 CS numbers, CS0-CS9

Please set your cell phone number as a CS number



2.3 Setup alarm sms



3 TEST

After completing these steps, you can do a simple test.

Leave PC, restart RTU and waiting it access working mode. You could look at the “SRV” light, when RTU power on it on, and it off when RTU access working mode completely.

Short the DI0 and GND, you can receive a alarm sms. The “SRV” light on when the RTU sends sms.